

# RayNova DRmm

Digital Mobile X-ray Radiography System



Beyond Boundaries in Healthcare:  
Pioneering the future with Medical Imaging

[www.kuanteng.com](http://www.kuanteng.com) [info@kuanteng.com](mailto:info@kuanteng.com)

**400-848-6088**

\* The actual product shall prevail. All pictures in this manual are for reference only. \*

## Beijing R&D Center/Production Base

Address: Unit 701, Building No.7, Yongchang Industrial Park, No.3, Yongchang North Road, Beijing Economic and Technological Development Zone, Beijing  
Tel.: +86-10-85718101  
Fax: +86-10-85718102

## Fuzhou R&D Center/Production Base

Address: 3rd Generation Semiconductor Digital Industrial Park, Xinyuan Road, High-tech District, Fuzhou, Fujian Province

## Henan R&D Center/Production Base

Address: No.18, North Side of Yudongnan Avenue, Yudongnan High-tech Industrial Development Zone, Huangchuan County, Xinyang City, Henan Province

## Liaoning R&D Center/Production Base

Address: Kuanteng Science & Technology Park, No.9, Yaodu Street, Economic and Technological Development Zone, Benxi, Liaoning  
Tel.: +86-24-45555355  
Fax: +86-24-45689287

## Anhui R&D Center/Production Base

Address: Building No.4, Bengshan Intelligence Industrial Park, Yanshan Town, Bengshan District, Bengbu, Anhui Province



寬騰 KUANTENG



**Flexible & Convenient,  
Easy Operation**



**3s Imaging,  
Presenting Image  
Immediately**



**Extremely low  
requirement on  
working environment**



**High quality configuration has more advantages.**

### Combined X-ray Unit/01 →

The built-in high frequency HV generator ensures the X-ray quality. The tube with dual focal spots meets the radiography of all body parts. The 220V plug and play power supply enables wider application scenarios.

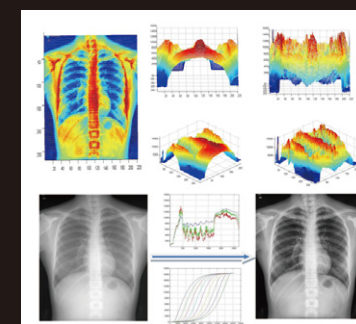


### ← 02/Flat Panel Detector

Self-developed amorphous silicone digital flat panel detector, 140μm pixel pitch high-definition display, 3-year long warranty.

### Intelligent System/03 →

3s Imaging improves the clinical working efficiency. The five-in-One workstation realizes multiple functions of one workstation and saves cost for user. The rich clinical software helps the accurate and highly effective clinical diagnosis.



### ← 04/Advanced Application Software

The tissue equalization technology improves the data integration. The automatic background identification technology removes artifacts and makes the diagnosis highly effective.

### Mechanical system supports complicated positioning/05 →

With freely folding and unfolding arm and any arbitrary motion curve, the system can be flappable and foldable, which covers the clinical radiography of all parts to the utmost extent, including the radiography of special parts and positions.

