

Supernova H15

Superconducting MRI Systemic Imaging System



Beyond Boundaries in Healthcare:
Pioneering the future with Medical Imaging

www.kuanteng.com info@kuanteng.com

400-848-6088

* The actual product shall prevail. All pictures in this manual are for reference only. *

Beijing R&D Center/Production Base

Address: Unit 701, Building No.7, Yongchang Industrial Park, No.3, Yongchang North Road, Beijing Economic and Technological Development Zone, Beijing
Tel.: +86-10-85718101
Fax: +86-10-85718102

Fuzhou R&D Center/Production Base

Address: 3rd Generation Semiconductor Digital Industrial Park, Xinyuan Road, High-tech District, Fuzhou, Fujian Province

Henan R&D Center/Production Base

Address: No.18, North Side of Yudongnan Avenue, Yudongnan High-tech Industrial Development Zone, Huangchuan County, Xinyang City, Henan Province

Liaoning R&D Center/Production Base

Address: Kuanteng Science & Technology Park, No.9, Yaodu Street, Economic and Technological Development Zone, Benxi, Liaoning
Tel.: +86-24-45555355
Fax: +86-24-45689287

Anhui R&D Center/Production Base

Address: Building No.4, Bengshan Intelligence Industrial Park, Yanshan Town, Bengshan District, Bengbu, Anhui Province



寬騰  KUANTENG

SUPERNOVA H15



The Tim technology is not only an innovation of table technologies, but an upgrade for clinical examination means. The clinical application of this technology saves 40% of the examination time, extends the scanning range of parts, and increases the image resolution by at least two times.



XUN YU MRI of Kuanteng Medical has an intelligent automatic scanning function that largely optimizes the scanning workflow, solves the positioning and location scanning problems for technicians, and generates high-quality images. It helps users to achieve integration of workflows, such as scanning, fast scanning, and image reconstructions, and maximize benefits.





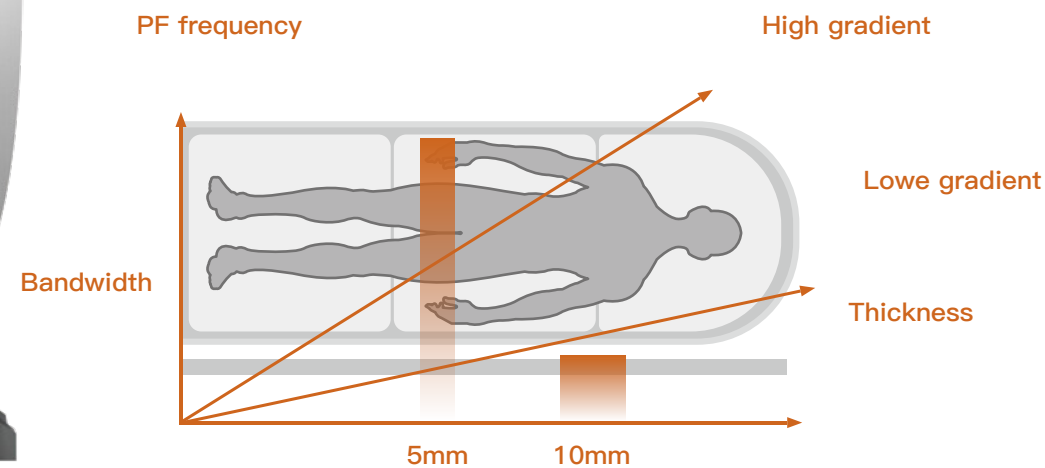
Magnet System

The “Golden ratio” magnet verified by our R&D and the market balances the examination comfort and high-quality images perfectly; The super high field homogeneity of the main magnetic field and excellent hardware configuration, combined with real-time dynamic shimming achieves perfect uniform fat suppression in the entire image.

K-power Gradient System

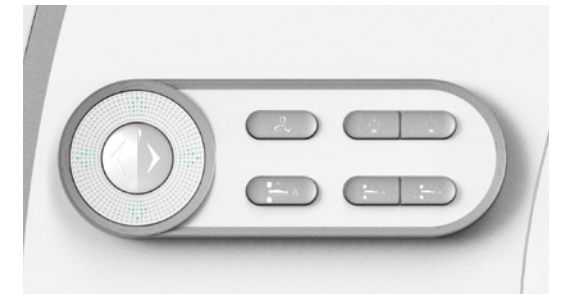
Technology with the national invention patent; self-developed super strong and fast gradient system for superfast scanning.

The robust gradient system provides hardware platform for superfast scanning and high-resolution imaging.



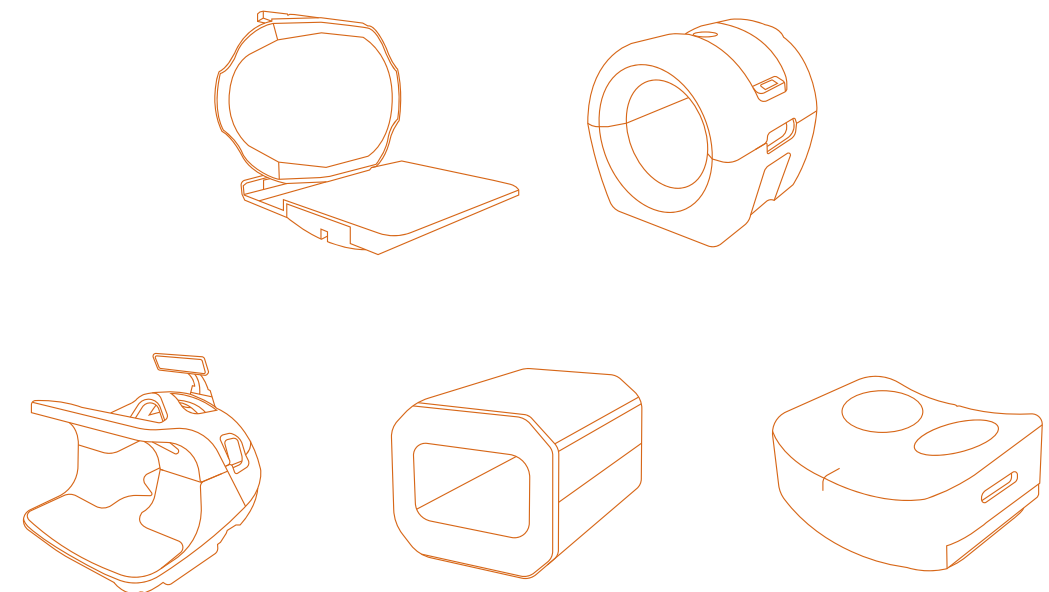
One-key Positioning

XUN YU MRI supports automatically entering the gantry and positioning by one-key operation without laser positioning to give more time to scan the patient, simplify workflow for technicians, and bring more benefits to the hospital.



Thoughtful Design

Commonly used scanning protocol modules are set, including fast scanning, conventional scanning, fine scanning for users to enter the scanning procedure by one-key operation. The one-key power off function allows the timely handling of emergencies during the examination.



Comprehensive and All-round Clinical Solutions

Superb Craniocerebral Nerve Diagnosis Function

The diffusion, perfusion, SWI, high-resolution vascular imaging without medicine injection, 3D-slice enhancement, and multiple functional images assist diagnosis and escort conventional anatomical images.

Adaptive Homogeneity Correction

In the scanning area, the homogeneity and height of the signal in each direction of the image domain are consistent, and no drop occurs.

Superb Post-processing Software

Users can use auto/manual original image optimization. Strong post-reconstruction processing functions, such as 3D MIP, MPR, and SSD surface reconstruction, help complete the diagnosis.

The 4th Generation Fast Freeze Scan Technology

The dual-engine freeze parallel acquisition technology improves scanning speeds by three to ten times. It is not affected by motions and can complete abdominal diagnosis in the shortest time through superfast scan speed.

New Complete Anatomical Sequence Library

The anatomical parts go down to the internal ear, orbit, pituitary, and thyroid; high-quality images can be output in the shortest time by the more thoughtful scan sequence pre-settings for achieving clinical scanning as soon as possible.

XUN YU Mute Scan Technology



Optimized mute sequence design almost eliminates the Lorentz force on the gradient coil, minimizing noise at the source.



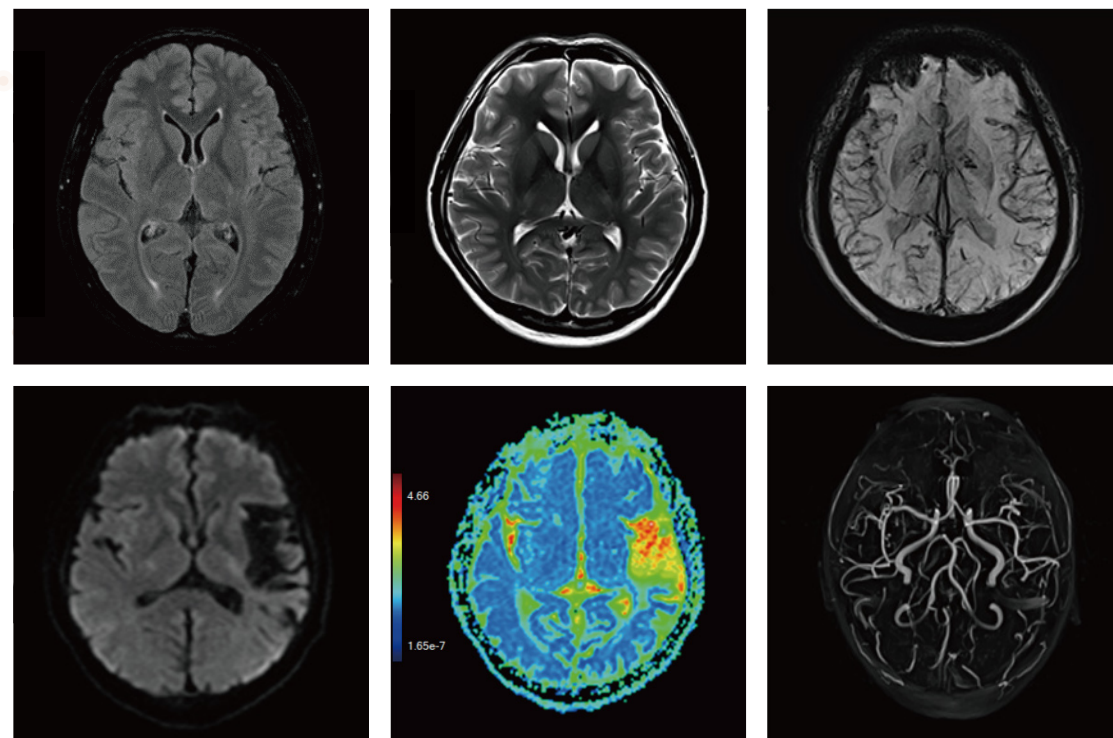
Intelligent gradient working mode and gradient noise reduction technology further reduce noise.



Significantly reduces noise by 70% to 95%

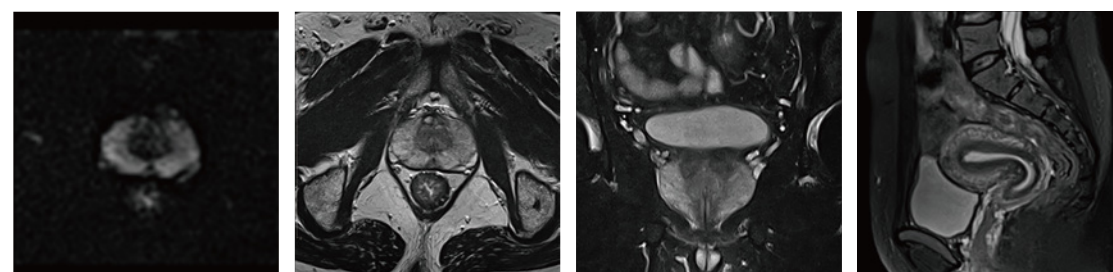


Lowers noise without compromising image quality



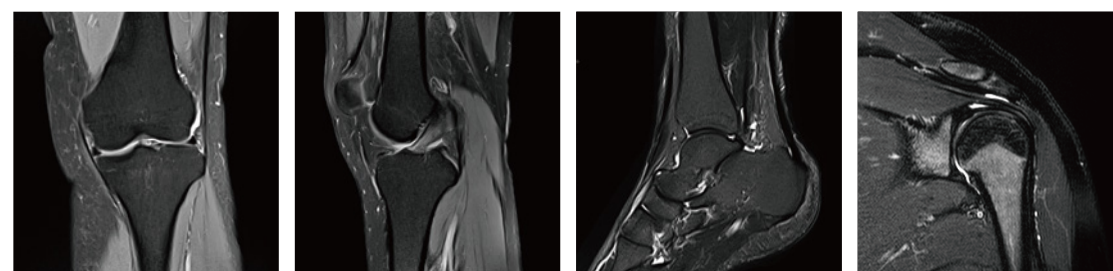
Superb Cranial Nerve Diagnosis

Supports common functions (T2, Flair+FS, DWI, SWI) for cranial nerve differentiation, diagnosis and assessment



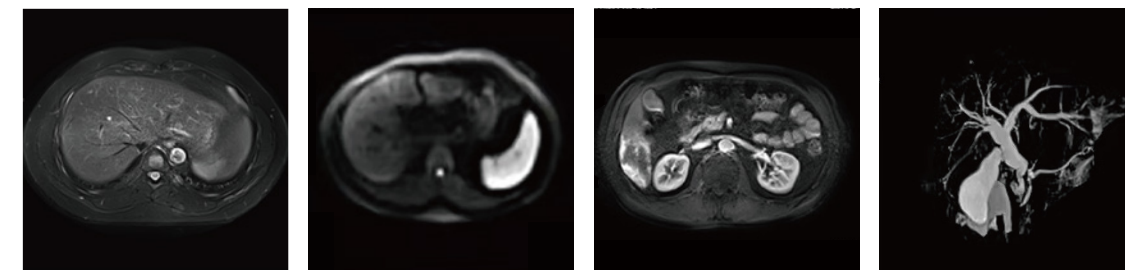
High-resolution Pelvic Imaging Technology

Targeted diffusion for special targets (molecular, cells, individuals, etc.), and high-resolution diffusion acquisition for special parts



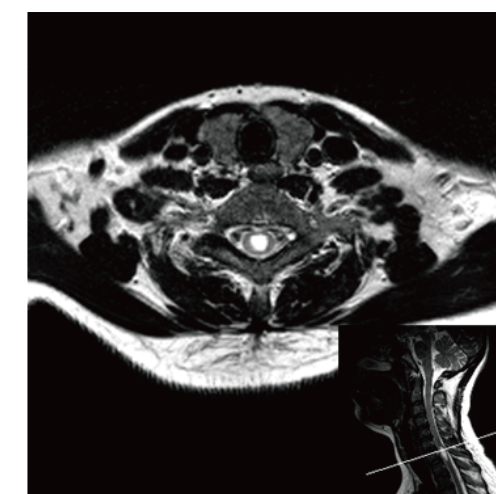
High-resolution Osteoarticular Solutions

Twenty-second axial slice imaging, rich STIR imaging technologies, High-resolution targeted imaging technology



The 4th Generation Freeze Scan Technology

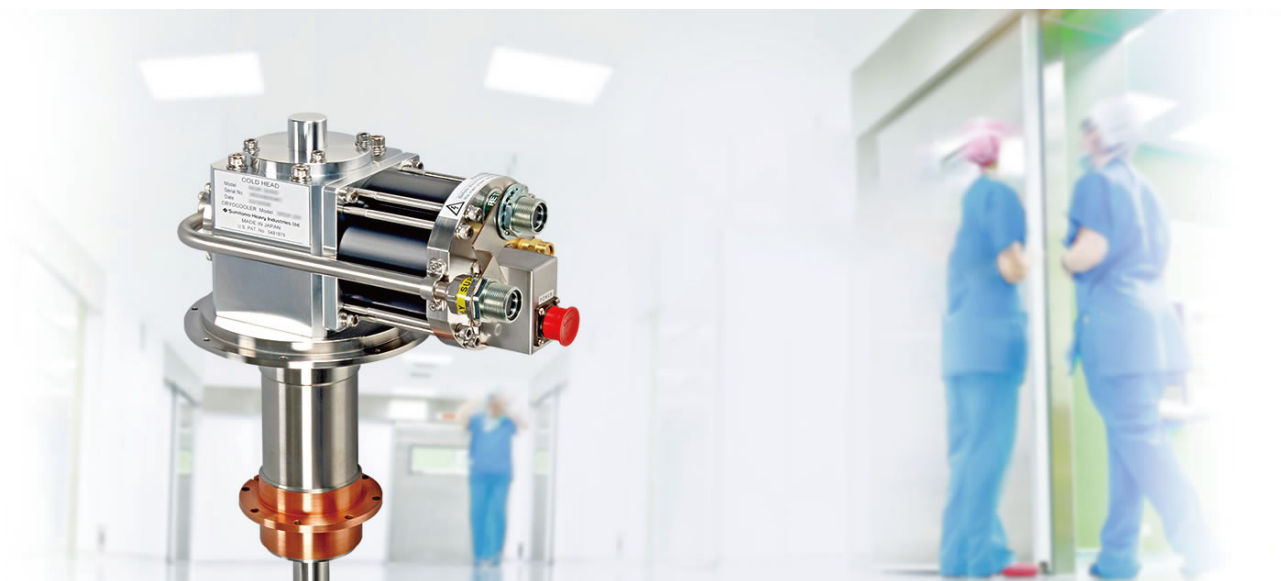
The dual-engine freeze parallel acquisition technology improves scanning speeds by three to ten times. It is not affected by motions and can complete abdominal diagnosis and diffusion sequence. The superfast scan and ASPIR can be completed while the patient breathes freely.



Full Spine Clinical Scheme

High-resolution spine imaging technology, one-key full spine imaging technology



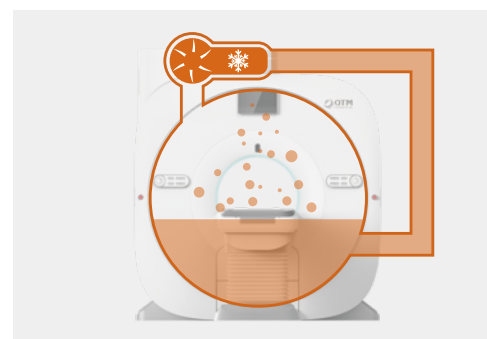


People Oriented

Low Operation and Low Consumption

XUN YU MRI applies the 4k cold head to liquefy the helium for cycle use, thus achieving zero consumption of liquid helium and extending the helium life cycle.

The observation of Supernova1.5T XU YOU, which has been used for many years, shows that its liquid helium surface has been maintained at the installed level, which indicates that the zero consumption of liquid helium has been truly achieved, and the operating cost has been greatly reduced.



Perfect After-sales Service

Installation Service

Detailed room layout specification and site instruction by professional engineers, and specialized site installation can make sure the accurate, reliable and rapid site installation process.

User Training Service

After installation, our senior product application training expert will provide professional application training and support for you.

Long-term Maintenance Service

Periodic site professional maintenance, and periodic remote testing can ensure the stable operation of the system and generating the best quality.

Continuous Upgrading Service

Free and continuous upgrading service of the software lifetime.

Exclusive customer hotline: 400-848-6088

- 7*24 hours service
- Remote technical support
- Professional engineers site service
- Online communication with senior experts