

Quantum CT Q580

Computed Tomography



Beyond Boundaries in Healthcare:
Pioneering the future with Medical Imaging

www.kuanteng.com info@kuanteng.com

400-848-6088

* The actual product shall prevail. All pictures in this manual are for reference only. *

Beijing R&D Center/Production Base

Address: Unit 701, Building No.7, Yongchang Industrial Park, No.3, Yongchang North Road, Beijing Economic and Technological Development Zone, Beijing
Tel.: +86-10-85718101
Fax: +86-10-85718102

Fuzhou R&D Center/Production Base

Address: 3rd Generation Semiconductor Digital Industrial Park, Xinyuan Road, High-tech District, Fuzhou, Fujian Province

Henan R&D Center/Production Base

Address: No.18, North Side of Yudongnan Avenue, Yudongnan High-tech Industrial Development Zone, Huangchuan County, Xinyang City, Henan Province

Liaoning R&D Center/Production Base

Address: Kuanteng Science & Technology Park, No.9, Yaodu Street, Economic and Technological Development Zone, Benxi, Liaoning
Tel.: +86-24-45555355
Fax: +86-24-45689287

Anhui R&D Center/Production Base

Address: Building No.4, Bengshan Intelligence Industrial Park, Yanshan Town, Bengshan District, Bengbu, Anhui Province



宽腾  KUANTENG

Explore More Accurately

Chest Screening

With the 1024×1024 reconstruction matrix and the 23.9 lp/cm spatial resolution, the equipment displays minimal lesions such as early lung cancer, pulmonary nodules, and pneumonia in high definition. The AI can identify minimal lesions, analyze lesion morphology and nature, and detect diseases with high sensitivity to assist in accurate clinical diagnosis.

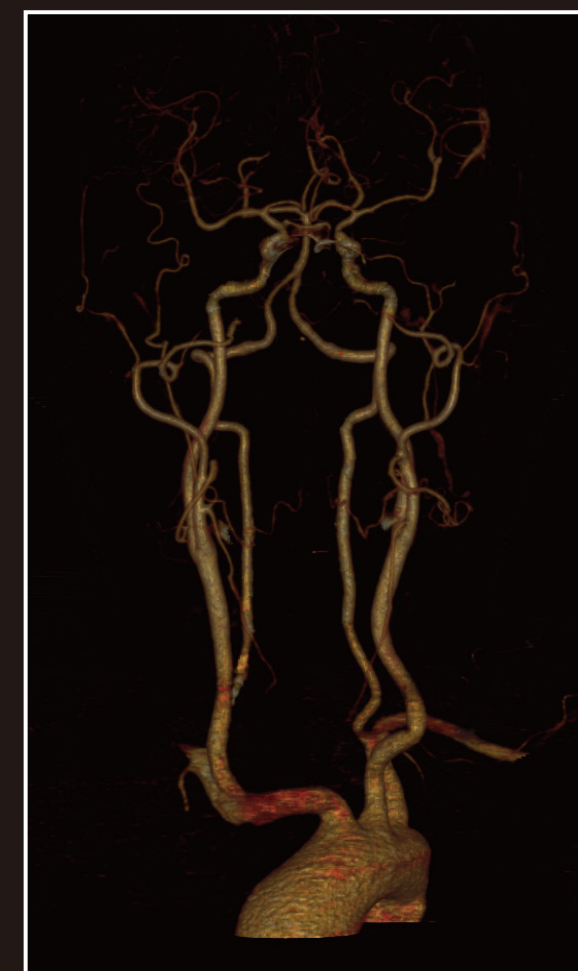


Pulmonary nodule analysis

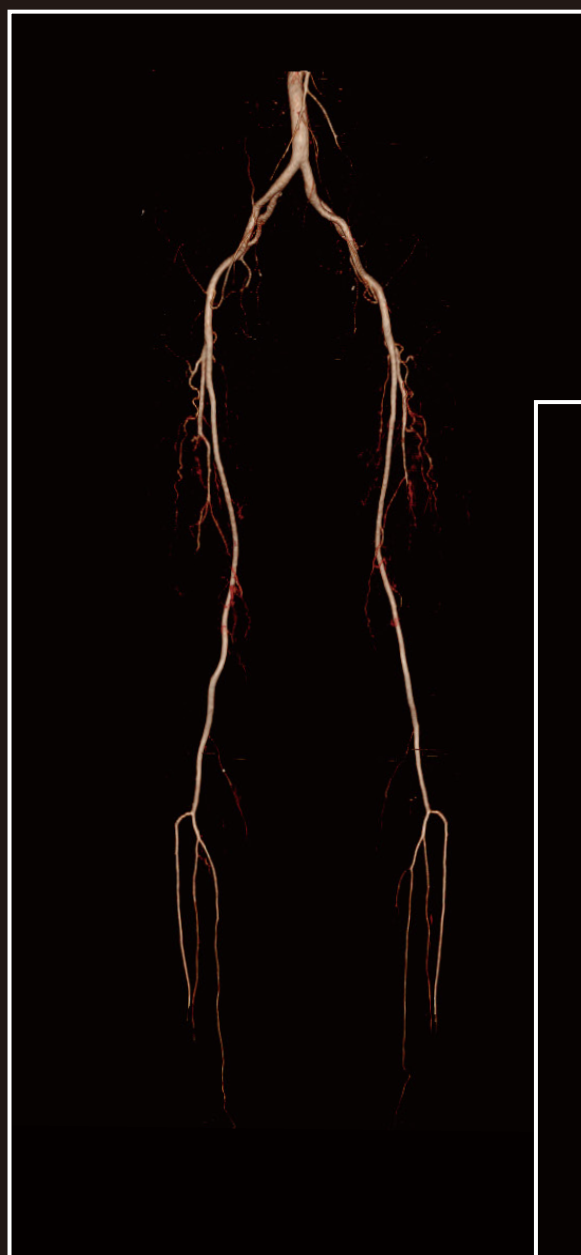
Explore Wider

Acquisition by 32-row 32-slices Detector
Large-range Angiography

With the 32-row physical detector and 20mm integrated coverage, 32-slice of human body images can be output after one rotation of the mechanical system. The fast acquisition speed and high-channel data transmission meet the conditions of large-range angiography and multi-phase scan, intelligently monitor the contrast agent concentration, and realize high-definition vascular structure reduction, thus providing more clinical diagnosis and treatment services.



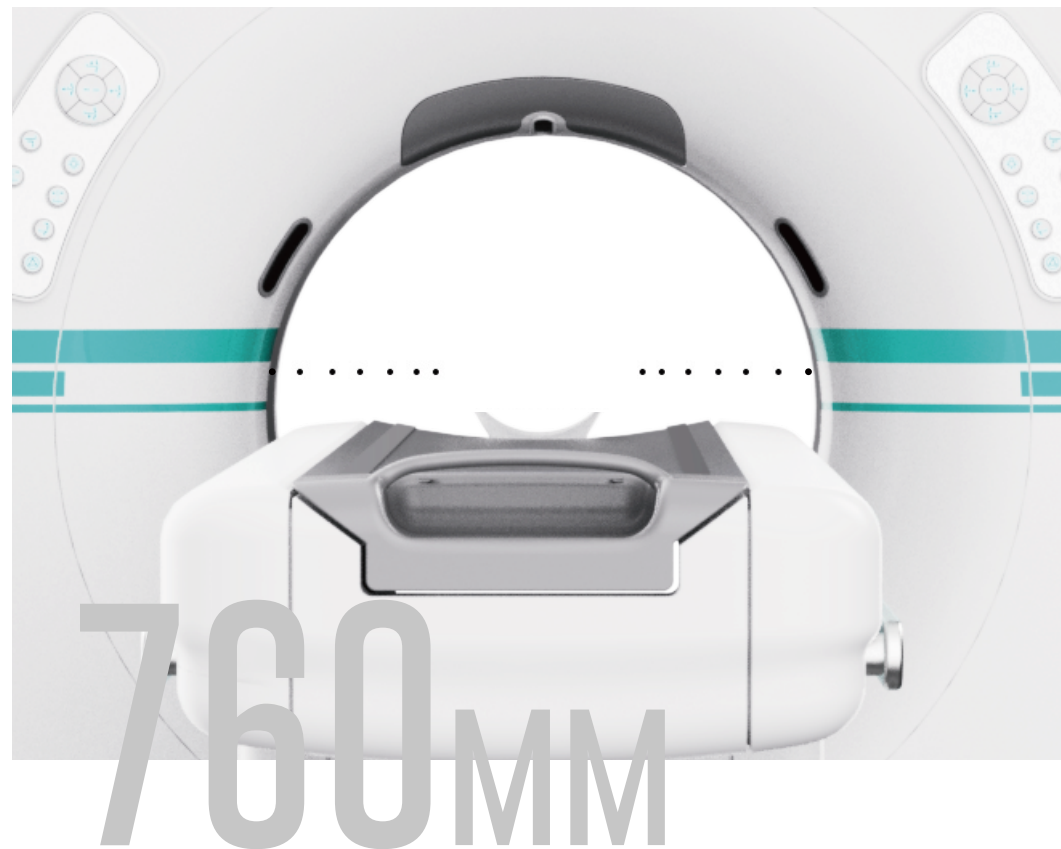
WIDE



Explore Wider

760mm Large Aperture Geometric Design for Comfort Examination Space and Multi-function Integration

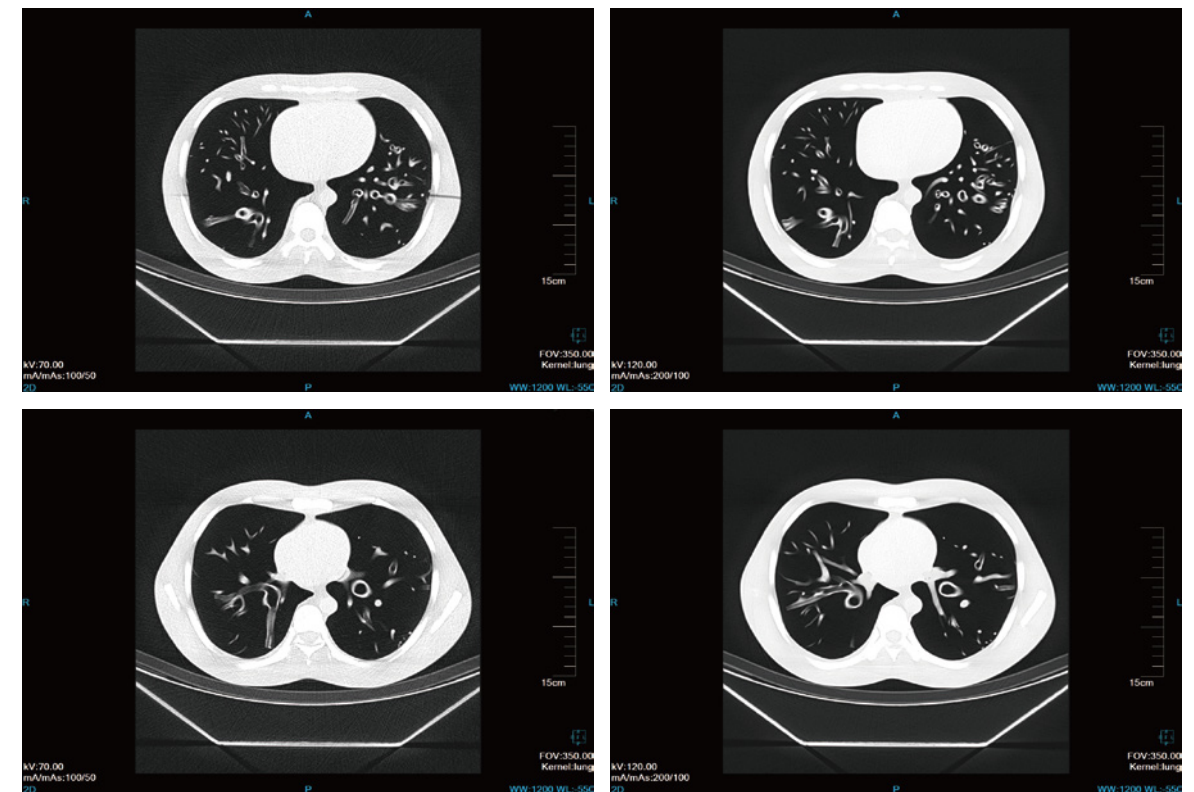
With the comfortable examination space, continuous scan and movement artifacts can be realized to improve the SNR; With the high-standard process scan table with the load-bearing of 250kg and an accuracy of up to 0.01mm, wider operation FOV can be obtained for multi-functional operations such as the clinical radiotherapy simulation, non-vascular intervention, and CT biopsy localization. The equipment is a cost-effective choice.



Explore More Environmental-friendly

Ingenuitive Hi-Q iterative algorithm and low dose scan reconstruct images with high-definition and high-quality

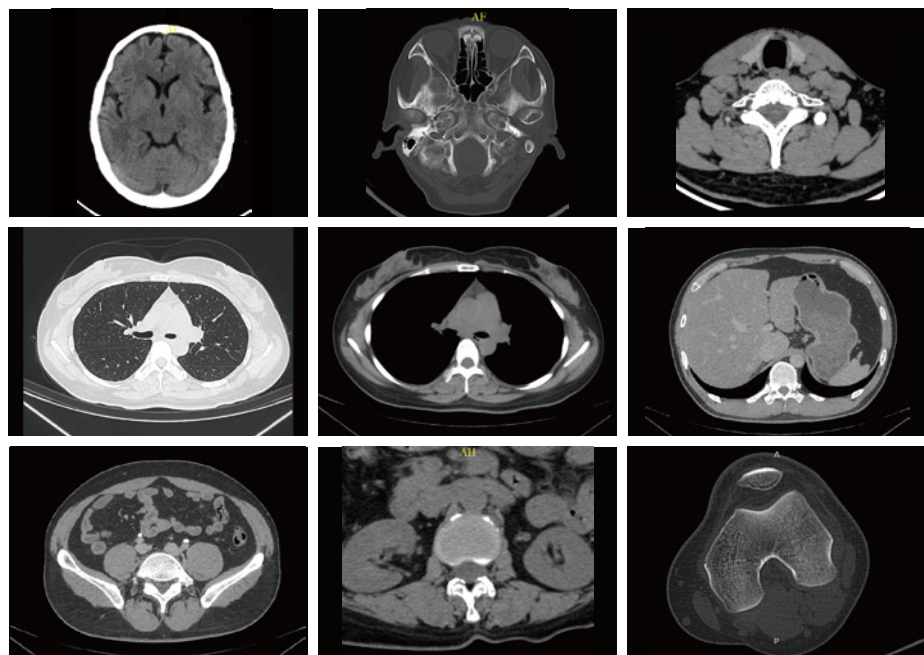
To promote environmental-friendly scan and improve the proper radiation practice, Gan Ning Quantum CT Q580 applies the ingenuitive Hi-Q iterative algorithm and low dose scan reconstruct images with high-definition and high-quality, thus avoiding excessive radiations to the adolescents and children. This technology also lay the foundation of CT being a routine physical examination item.



Explore More Intelligently

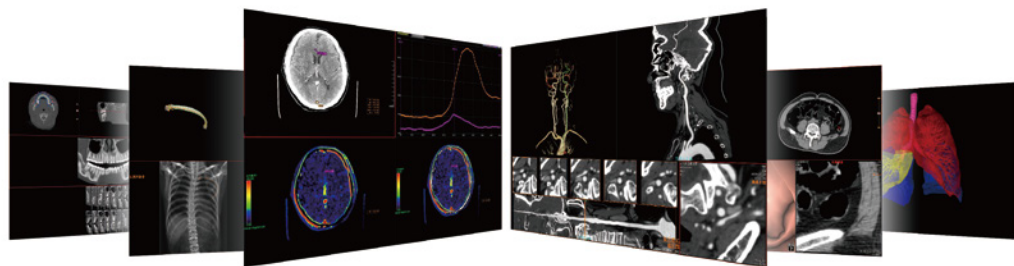
Intelligent mA (Auto-mA) Regulating Technology

Intelligently identifies the anatomical tissue information of patients to make the best scan protocol and automatically regulates the exposure current to reduce radiation dose and gain high-resolution and high-quality images.



Intelligent Software

CT vessel analysis Pulmonary nodule analysis Rib analysis CT lung analysis
CT perfusion analysis CT colon analysis Dental 3D CT



Some features are optional or used with the workstation.*

New Integrated Image Chain

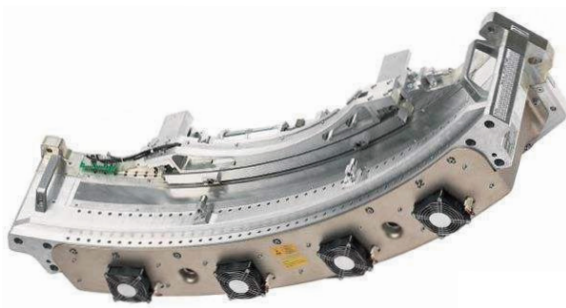


Tube

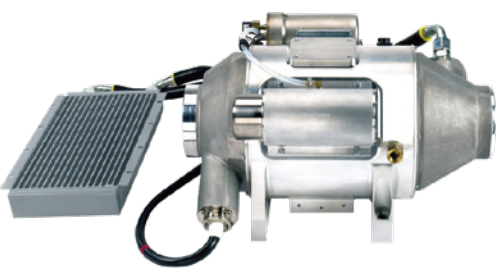
The 5.3MHU large capacity tube with high stability and super continuous scan capability meets the examinations of large patient circulation and ranges and the multi-phase angiography and saves time. The 5.0-second mechanical system rotating reduces the breath-holding time during abdominal examination to improve the SNR.



Detector



DUNLEE
5.3MHU
Large Capacity Tube



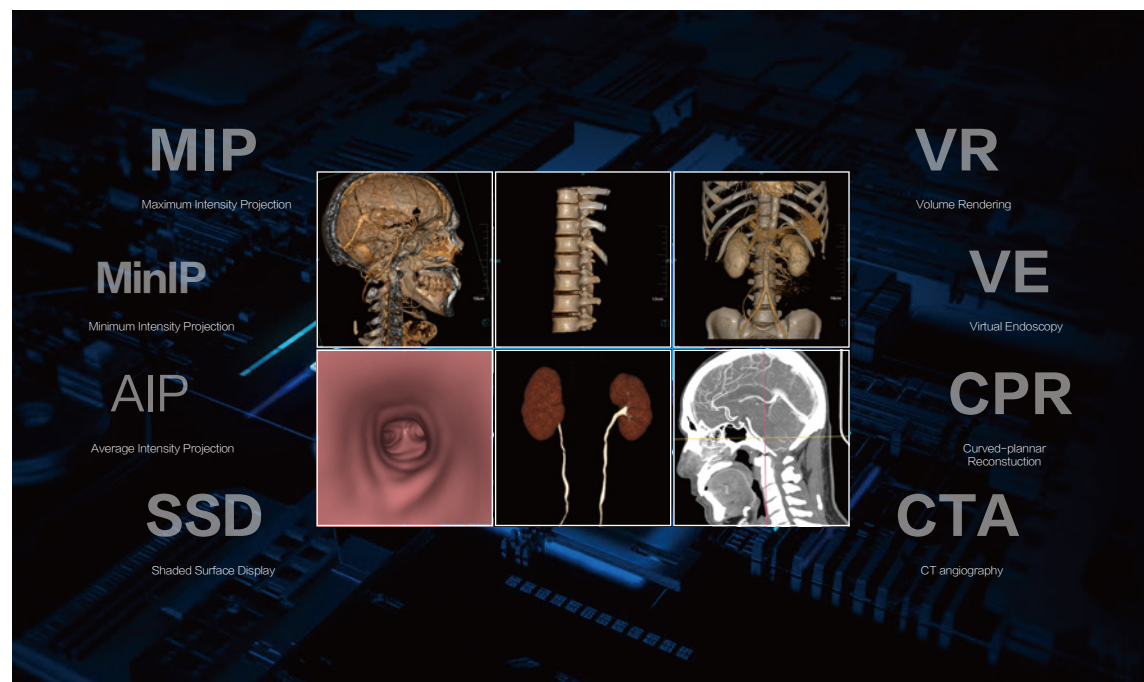
The real 32-row physical detector achieves an all-around presentation of high-definition, fast, and thin-slice images with the submillimeter slice thickness acquisition. The detector can achieve isotropy of images, allowing for MPR, surface reconstruction, VR, and other 3D reconstruction functions from any direction, all of which can produce equivalent high-quality image quality.



HV Generator

The 50kW high-power HV generator provides enough power for the tube. There are five levels of peak voltage regulation, including 70kV, 80kV, 100kV, 120kV, and 140kV, and the output current ranges from 10mA to 420mA, meeting all clinical demands.

Advanced Clinical Application



Perfect After-sales Service

Installation Service

Detailed room layout specification and site instruction by professional engineers, and specialized site installation can make sure the accurate, reliable and rapid site installation process.

User Training Service

After installation, our senior product application training expert will provide professional application training and support for you.

Long-term Maintenance Service

Periodic site professional maintenance, and periodic remote testing can ensure the stable operation of the system and generating the best quality.

Continuous Upgrading Service

Free and continuous upgrading service of the software lifetime.

Exclusive customer hotline: 400-848-6088

- 7*24 hours service
- Remote technical support
- Professional engineers site service
- Online communication with senior experts